



Next generation compression garments

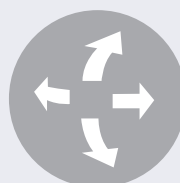
A unique product assortment combining the most comfortable fabric together with high quality compression and functional design.



Seamless



Compression class 1



4-way stretch



40-60°C washing

Smart products

NordiCare's line of seamless knitted compression garments are designed to be worn directly after surgery and during the recovery period. To facilitate wear, we have incorporated a lot of smart design such as double closures, silicone waist line and open crotch. They are discreet under your clothing which helps you feel good while getting better. The line is constantly evolving and will in the near future expand with complementary models. All models are available in two colours, black and beige.



Seamless 4-way stretch

The knitted seamless 4-way stretch make the garments comfortable to wear and easy to fit as they adjust to body shape. The breathable and soft material transports moisture and is yet quick drying, durable and supportive. Small parts can be cut for drains or other facilities. The garments easily stay fresh and hygienic since they can be washed at home in high temperatures (40-60°C).



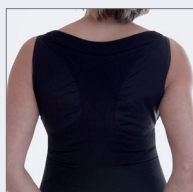
Targeted compression

Each garment is designed to provide targeted compression (class 1), meaning necessary compression and support exactly where needed. By controlling compression in the operated area, the healing process advances faster and patient comfort is heightened. For a perfect fit, the knitted zones and seams follow the contours of the body. Each product is specially designed based on indication and will ensure the right level of compression over time.

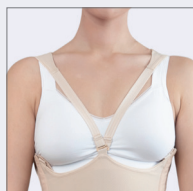


Alison

Compression body with high back. Recommended after surgery or liposuction on the abdomen, sides and back. Supportive over the abdomen/pocket and wide back. Sizes XS-2XL. Art.no 51203



Wide back

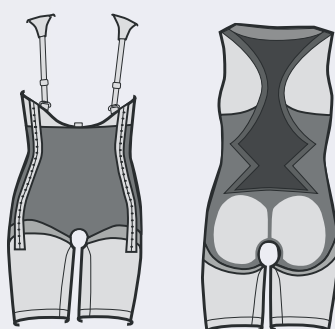


Moveable shoulderstraps

Adjustable shoulder straps

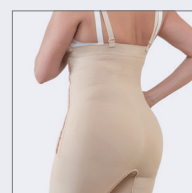
Adjustable hook and eye closure in 3 steps both sides

Open crotch



Cindy

Compression bodysuit with high waist. Recommended after surgery or liposuction on buttocks, hips, abdomen, thighs and back. Knitted shaped compression over buttocks and groins for optimal fit. Reinforced knitting over abdomen for extra support. Sizes XS-2XL. Art.no 51208.



Shaped knitting

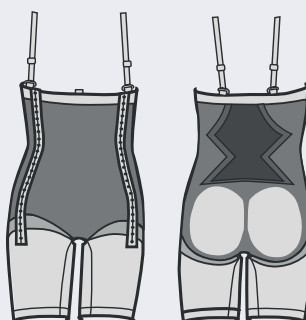


Moveable shoulderstraps

Adjustable shoulder straps

Adjustable hook and eye closure in 3 steps both sides

Overlapping opening in the crotch



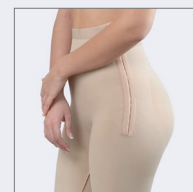
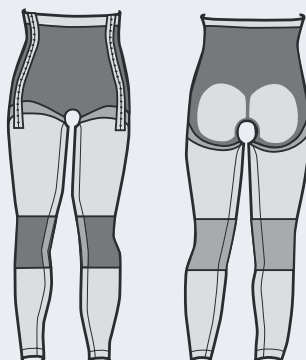
Patsy

Full length compression pants. Recommended after surgery and liposuction on the leg or abdomen. Sizes XS-2XL. Art.no 51201.

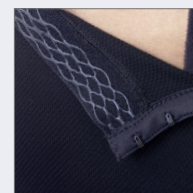
Silicone waistband

Adjustable hook and eye closure in 3 steps both sides

Open crotch



Easy to apply



Silicone makes the pants sit in place

Smart design

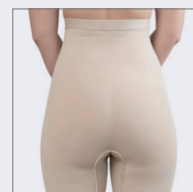
We have incorporated a lot of smart design in our garments. Double closures make sure they are easy to put on and adjust. Silicone waist line for anti-slip effect and open crotch models, so you can wear them directly after surgery. The garments are possible to wash at home in high temperatures and made in quick drying material. They are basically invisible under your clothing and help you feel good while getting better.

Annie

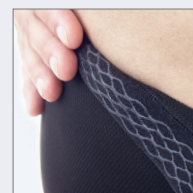
Below knee compression pant in pull-on model. Recommended after minor surgery or liposuction on the leg and abdomen. Sizes XS-2XL. Art.no 51202.

Silicone waistband

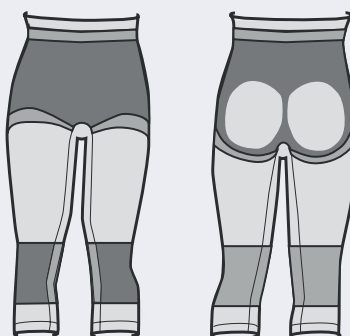
Can be used as step-2-product



Easy to apply



Silicone makes the pants stay in place



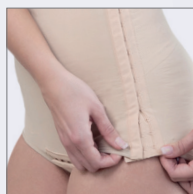
Daisy

Fully openable compression body with double material over the abdomen. Recommended after surgery and liposuction on the abdomen. Sizes XS-2XL. Art.no 51204.

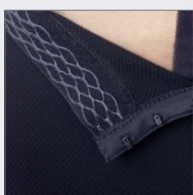
Silicone waistband

Adjustable hook and eye closure in 3 steps both sides

Crotch closure, hook and eye



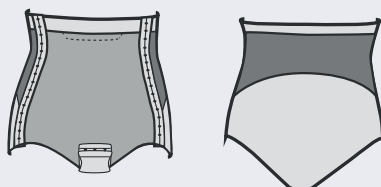
Easy to adjust



Silicone makes the pants stay in place

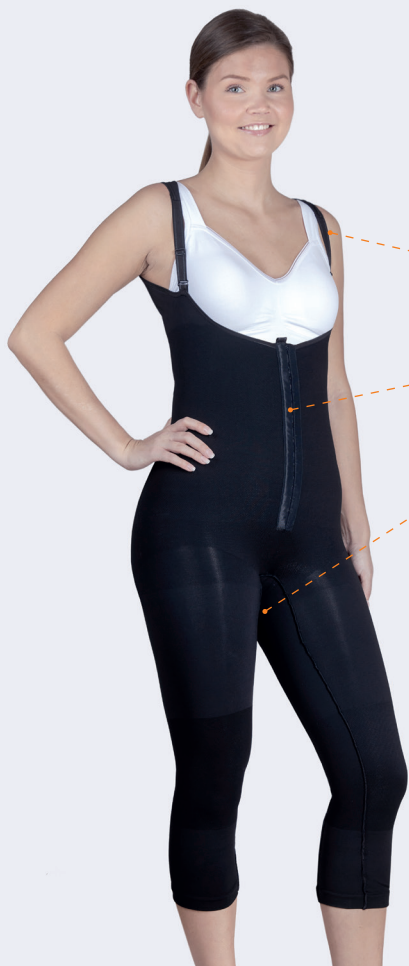


Fully openable



Dolly

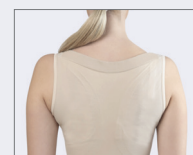
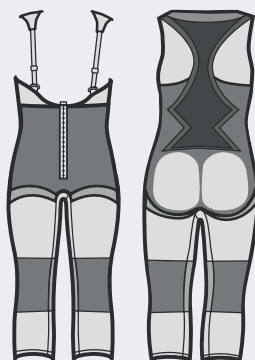
Compression bodysuit with high back. Recommended after surgery on buttocks, hips, abdomen and back, such as liposuction or BBL. Supportive over the abdomen. Sizes XS-2XL. Art.no 51207.



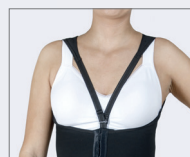
Adjustable shoulder straps

Adjustable hook and eye closure in 3 steps

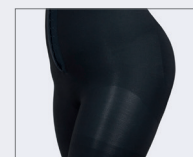
Overlapping opening in the crotch



High back and adjustable fit



Moveable shoulderstraps



Shaped knitting over buttocks

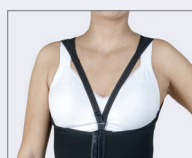
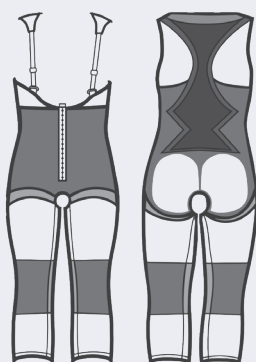
Hollie

Compression bodysuit with high back. Recommended after surgery on buttocks, hips, abdomen and back, such as liposuction or BBL. Supportive over the abdomen. The same design as Dolly except for the fully open crotch. Sizes XS-2XL. Art.no 51209.

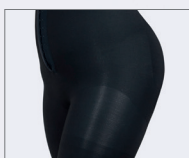
Adjustable shoulder straps

Adjustable hook and eye closure in 3 steps

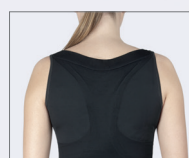
Open crotch



Moveable shoulderstraps



Shaped knitting over buttocks



High back and adjustable fit



Jill

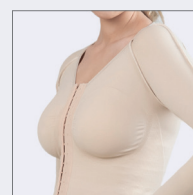
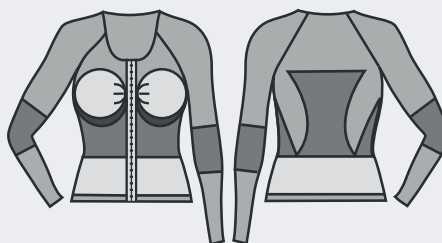
Compression bolero with full length sleeves. Recommended after arm and back surgery such as liposuction or arm lift. Hook and eye closure in the front for easy application and adjustment. Sizes XS-2XL. Art.no 51205.



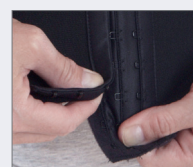
Adjustable hook and eye closure in 3 steps

Fits different body shapes and bra sizes

Lighter compression over the abdomen



Flexible bust



Easy adjustment

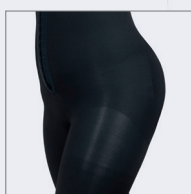
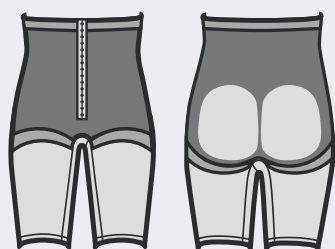
Peggy

Knee-length compression pants. Recommended after surgery on buttocks, hips or thighs, such as liposuction or BBL. Peggy can also be used as a "Step 2 product" after surgery when compression is recommended for a longer time. Sizes XS-2XL. Art.no 51206.

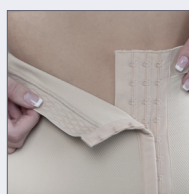
Silicone waistband

Adjustable hook and eye closure in 3 steps

Overlapping opening in the crotch



Shaped knitting over buttocks



Easy to adjust and stay in place



How to measure

A. Waist

Measure around the thinnest part of the waist.

B. Hip

While feet together, measure circumference of the fullest part of the hip area.

C. Under bust

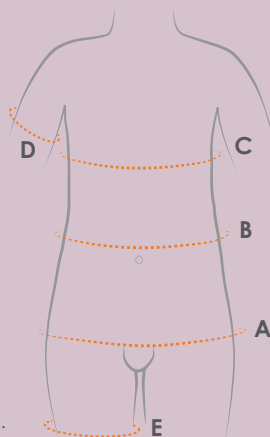
Measure the circumference under the bust.

D. Upper arm (biceps)

Measure around the largest part of the upper arm.

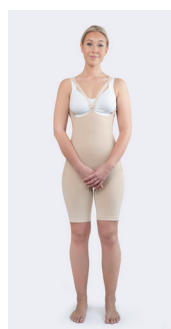
E. Thigh

Measure the circumference of the fullest part of the thigh.

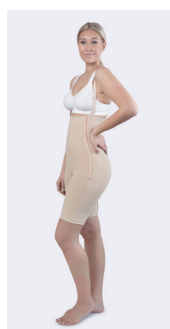


Seamless knitted assortment

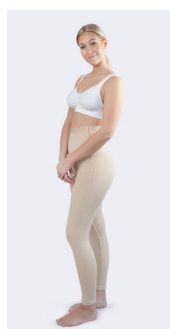
Size	Waist (A)	Hip (B)	Under bust (C)	Arm (D)	Thigh (E)
X Small	62-68 cm	86-91 cm	63-70 cm	22-25 cm	46-50 cm
Small	69-75 cm	92-97 cm	70-77 cm	25-28 cm	50-54 cm
Medium	76-83 cm	98-103 cm	75-82 cm	28-31 cm	54-58 cm
Large	84-92 cm	104-111 cm	80-87 cm	30-33 cm	58-62 cm
X Large	93-101 cm	112-119 cm	85-92 cm	31-34 cm	62-66 cm
2X Large	102-110 cm	120-127 cm	90-97 cm	33-36 cm	66-70 cm



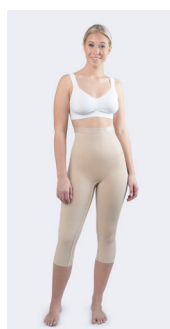
Alison



Cindy



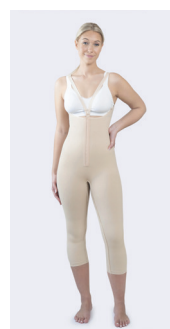
Patsy



Annie



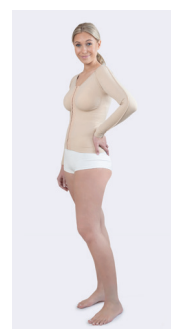
Daisy



Dolly/Hollie



Peggy



Jill


NordiCare®

NORDICARE ORTOPEDI + REHAB AB • Solrosvägen 1 • SE-263 62 Viken, Sverige
+46 (0)42-35 22 20 • info@nordicare.se • www.nordicare.se